

# How to add “-i” option for the MMSSTV ver1.13 (a revised edition)

1. a) Extract zip file of MMSSTV which you downloaded as following directory.



Zip file

C:\MMSSTV\Mmsstv.exe (an instance)

- b) Open the extracted file as Fig.1.

2. a) Find a Mmsstv.exe i-con and right click on it.

- b) You will have an another pop up menu as Fig.1.

- c) Create a short cut i-con with select an item of “Making short cut (S)”

- d) You will have a short cut i-con as Fig.2.

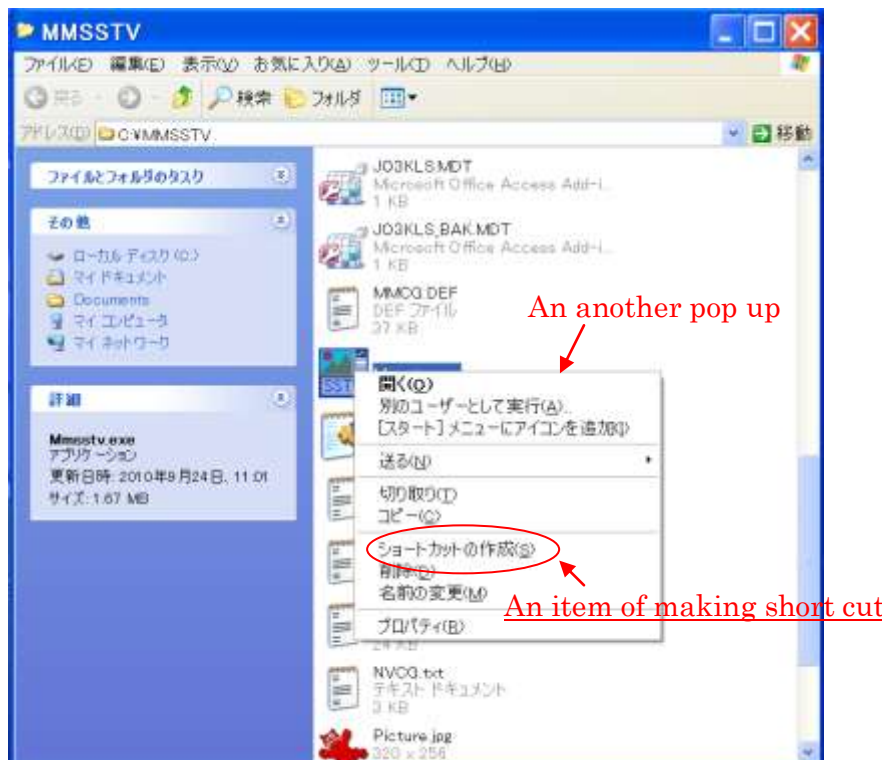


Fig.1

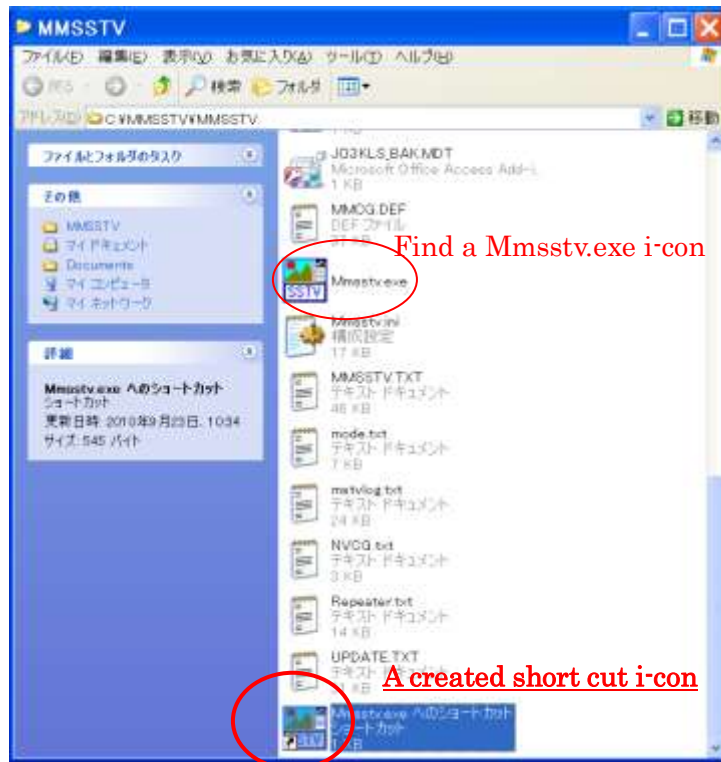


Fig.2.

3. Open a short cut property (short cut window) with right click on a created short cut i-con as Fig.3.

4. Find a target (link sight) of Mmsstv.exe as Fig.3.

In this case, “¥” is as same as “\”.

5. Add -i as Fig.4 and click the “Apply(A)” button.

Do not forget space between “.exe” and “-i”.

6. Close a short cut property (short cut window) with click “OK” button after click “Apply(A)” button.

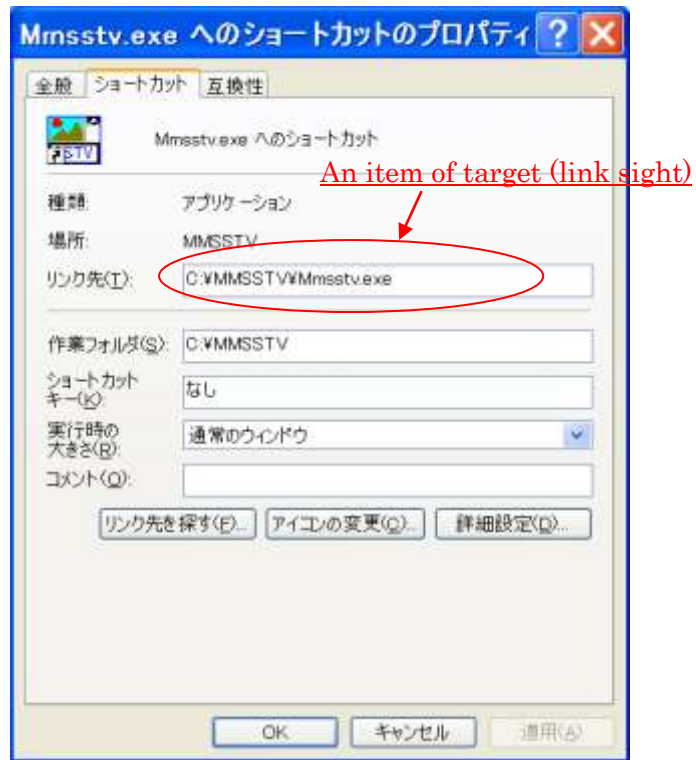


Fig.3

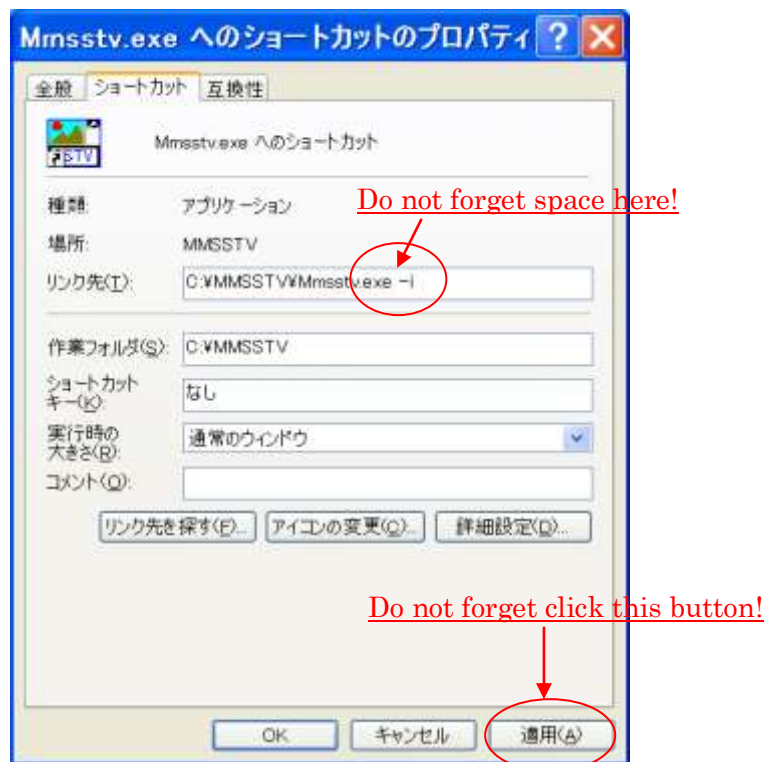


Fig.4

7. a) Run MMSSTV internet version (added “i” option version) with click on created short cut i-con as Fig.5.
- b) You are able to see a number at top of the spectrum as 200,500,900 and 1300.
- c) This number is different from the radio version of ver.1.13 as 1200,1500,1900 and 2300.
- d) This is why we are able to use “i” option version on CQ-100.
- e) The Ver.1.13 can be used for the radio without “-i” option.

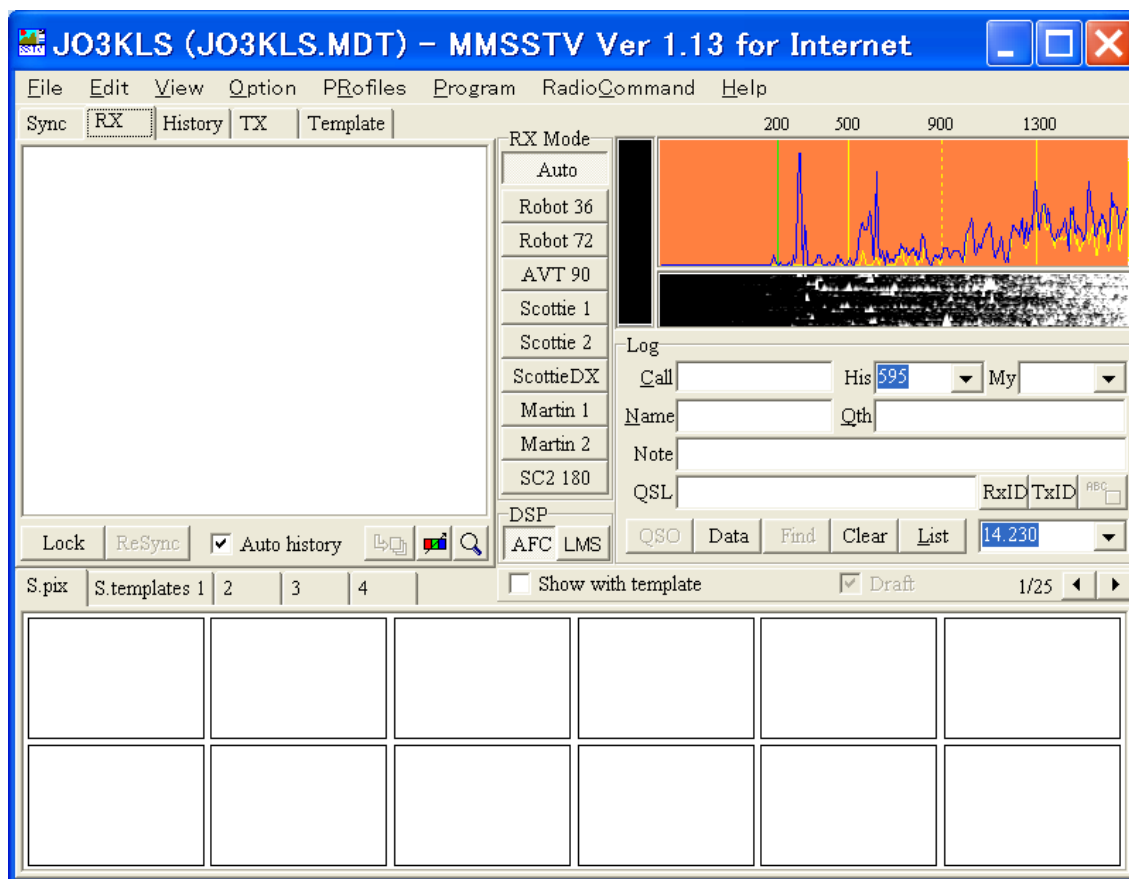


Fig5

JA5CU, JO3KLS  
As of Sept. 25, 2010