

Adjustment of the sound card for the EasyPal with HamSphere

(OS : Windows XP)

Shu JO3KLS

One of my computers had to adjust the sound card as follows:

1. Volume Control

First of all, I have adjusted “Volume Control” of sound card.

It was better to put both of “Volume control” lever and “Wave” lever at around half way of each adjustable range as Fig.1.

Further, it was very important that the “Microphone” at this portion should be muted.

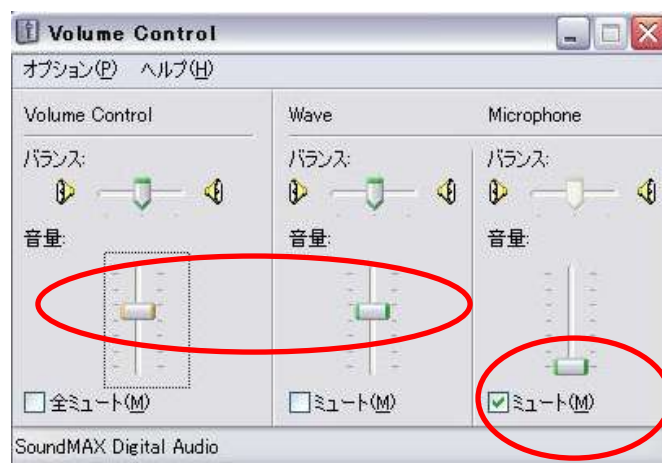


Fig.1

2. Recording Control

2-1. Suitable adjustment

This work at “Recording control” of the sound card was very important for me.

My best position of the “Wave Out Mix” lever and “Microphone” lever are as Fig.2.



Fig.2

After properly adjustment, I select “Tune” at “Action” to generate tuning tone.
 The position of three white lines is properly at three green marker of waterfall at EasyPal of my computer as Fig.3 or Fig.4.

Fig.3 shows a state which is generating tuning tone for EasyPal itself.

Fig.4 shows a state at EasyPal of my computer during sending tuning tone with HamSphere.

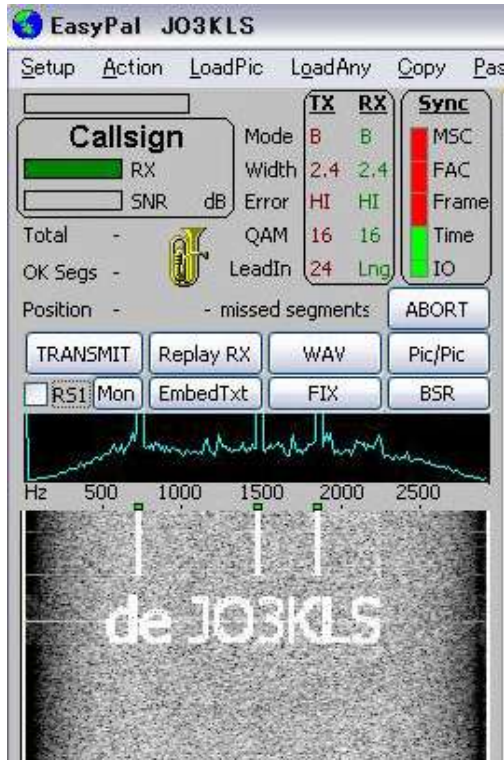


Fig.3

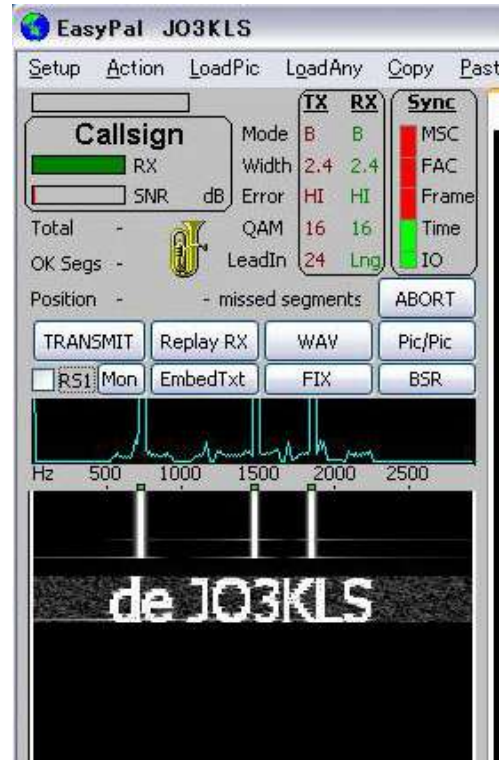


Fig.4

• Comparison of waterfall density during stand by for receive

Compare density of waterfall at Fig.5 and Fig.6



Fig.5 (Light-Good)

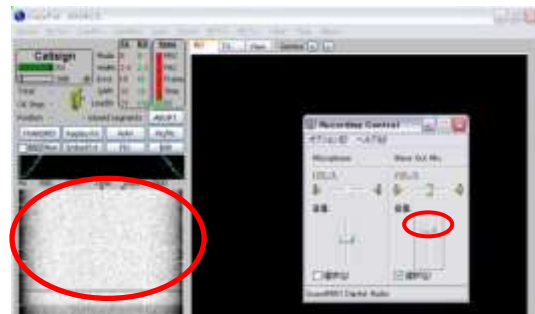


Fig.6 (Deep-Bad)

2-2. Unsuitable adjustment

If adjustment was not suitable, there were following phenomenon.

- ① Waterfall density was very deep during stand by for receive as Fig.6
- ② My callsign and three white lines were not clear at waterfall when I generated tuning tone for EasyPal itself as Fig.7.
- ③ Three white lines at waterfall of my EasyPal were blurred during I was sending tuning tone with HamSphere.

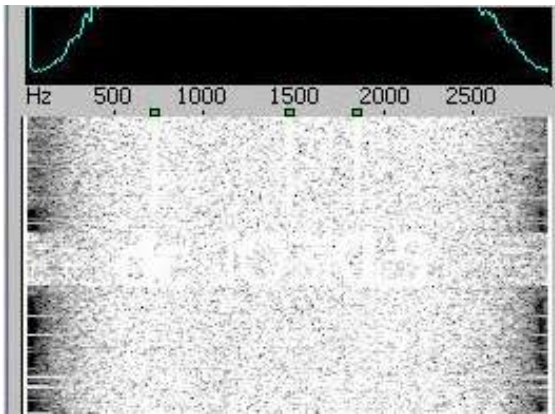


Fig.7

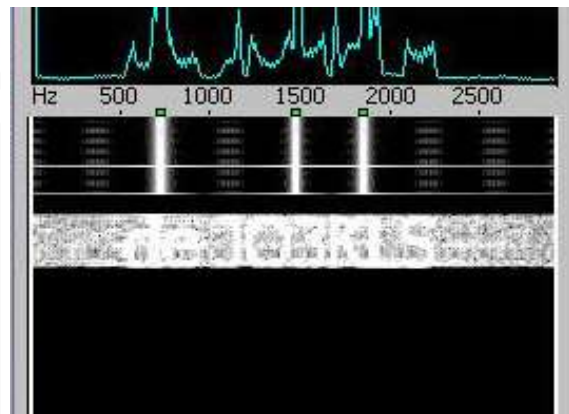


Fig.8

- ④ At receiving station, too many harmonics as Fig.9.

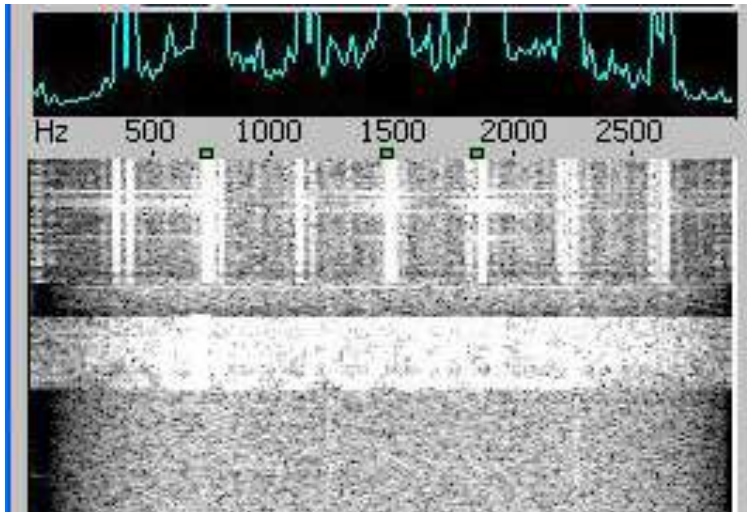


Fig.9

• **How to indicate the “Recording control” of Sound card.**

At EasyPal screen, select “Setup” with your mouse then click “RX Input(not Vista)” as Fig.10.

When you click “RX Input(not Vista)”, “Recording control” as Fig.2 will appear.

Keep an indication of this “Recording control” during your QSO.

If you select “TX Volume(not Vista)”, then “Volume Control” will appear.

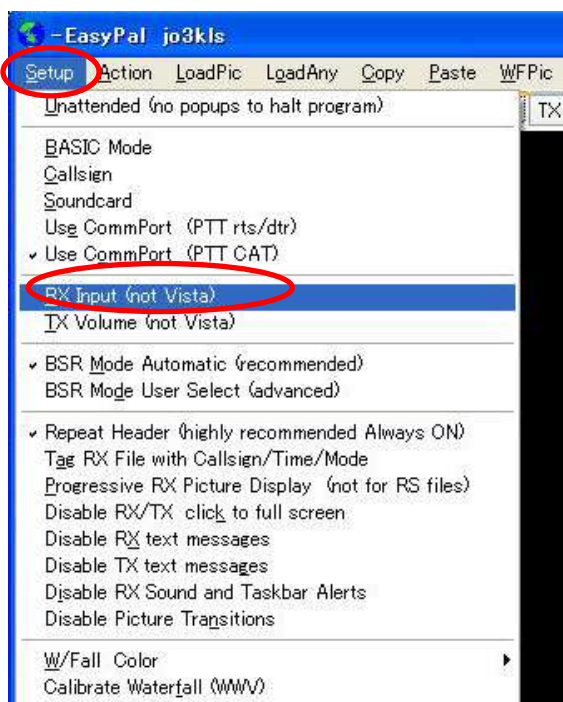


Fig.10