

My SSTV setting for MixW2 and CQ-100

By JO3KLS

I knew the SSTV on CQ-100 by W1GNS, Norm and he introduced me software MixW2 mode TTT about a month ago. These days, I am enjoying SSTV on CQ-100 very much. Since I knew the SSTV on CQ-100, I have learned some of SSTV and am still learning some of SSTV on CQ-100.

Here, I complete my experience about MixW2 SSTV on CQ-100 at present.

1) My circumstances for the SSTV

- One(1) Laptop Computer: CPU Celeron M 1GHZ, 256MB memory
- Built-in one(1) soundcard no stereo-mixer,
- OS : Windows Xp Sevicpack2
- Wireless LAN with other two(2) computers And local IP address is fixed.
- Interfacing between MixW2 and CQ-100 is as Fig.1

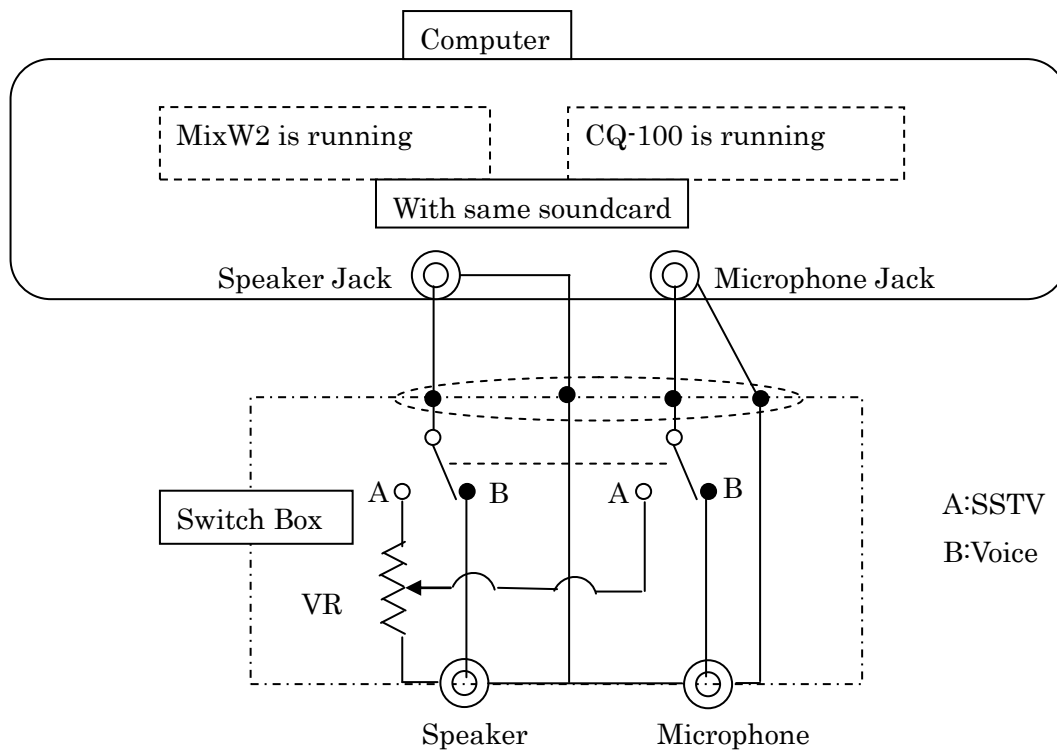


Fig.1

Note

1. This is my way
2. There are many other way.
3. The VR may not be necessary.

2) MixW2 setting

● Output amplitude setting

Click “Mode” then select “Output amplitude for this” as Fig.2

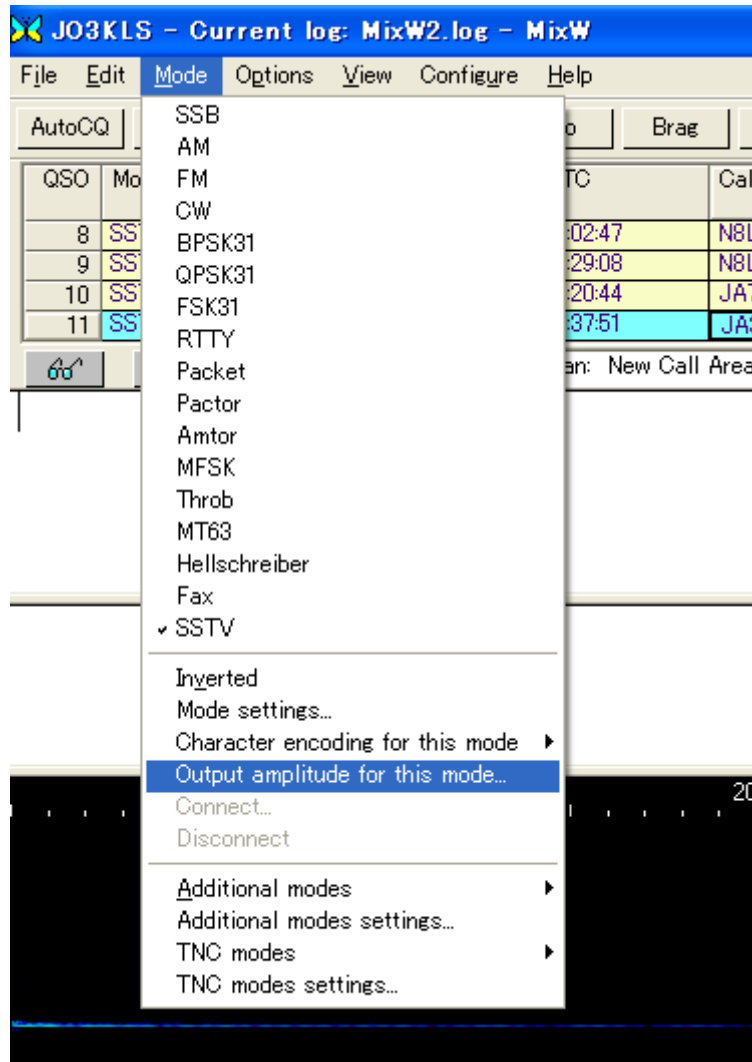


Fig.2

Then, set amplitude correction number as Fig.3

JA7NR, Yoshi informed me this function of MixW2.

My experience, the best value of this number is between 0.1000 and 0.3000.

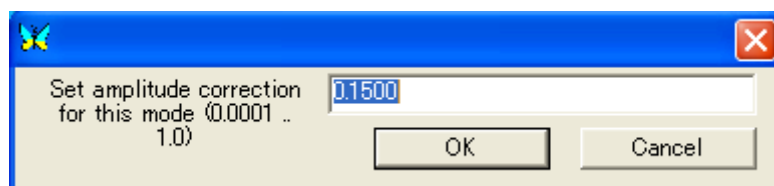


Fig.3

● TX & RX frequency setting

Click “Mode” then select “Mode setting” as Fig.4

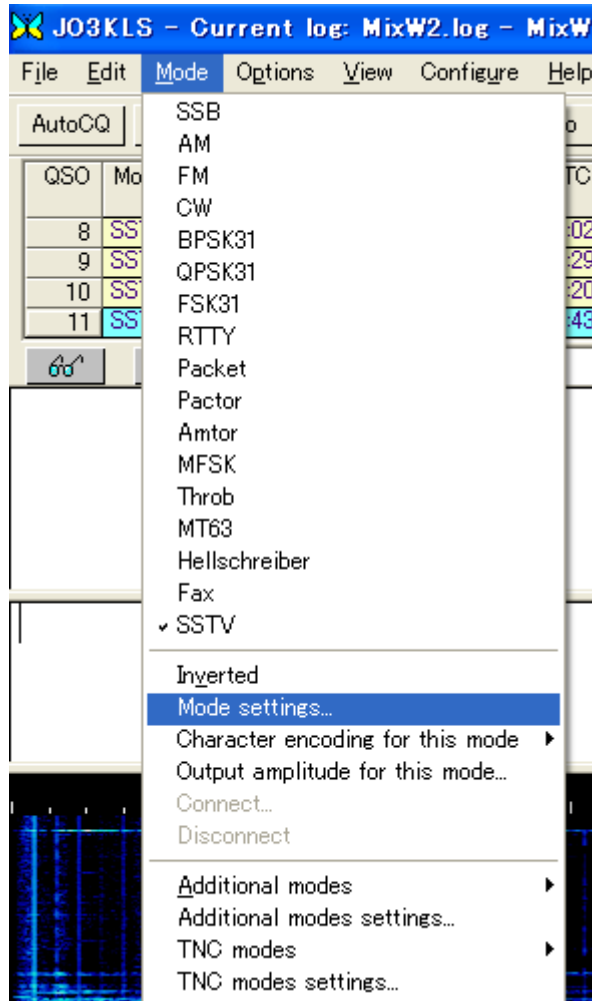


Fig.4

- : Then “SSTV setting” pop-up as Fig.5 come.
- : Change the TX and RX frequency number from 1900 to 900.
- : My experience, the RX slant correction number vary from the present number if I adjust slant while I am receiving the picture.
- : The TX slant correction number does not vary after I click “GO” button for “Samplerate correction”
- : For the “Samplerate correction”, refer to the MixW2 SSTV manual.
- : Refer to the MixW2 SSTV manual for the other miscellaneous on the “SSTV setting” as Fig.5

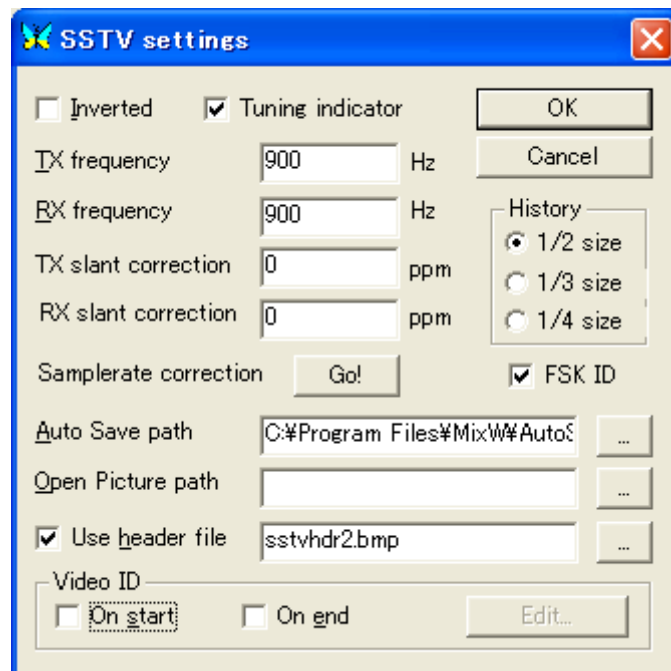


Fig.5

- Select Mode

There are several mode for SSTV but I should select “TTT” mode for CQ-100 as Fig6. and the others, refer to the manual.

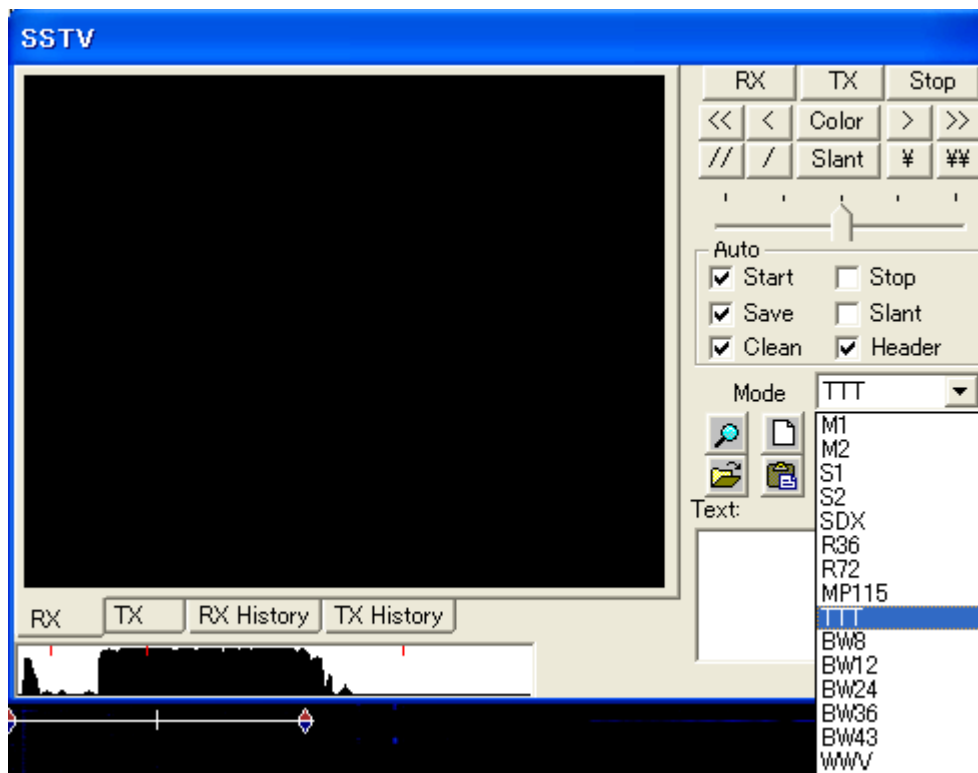


Fig.6

● Automatic options

I am using “Start”, “Save”, “Clean” and “Header” as Fig.6.

: “Auto-Start” trigger to receive the picture automatically.

: If I fail auto-start then I click the “RX” button.

: “Auto-Save” save the received picture automatically to the directory which I defined as shown at Fig.5

: “Auto-Header” paste the header picture on the TX picture automatically.

: I usually use the my original header as Fig.6-1

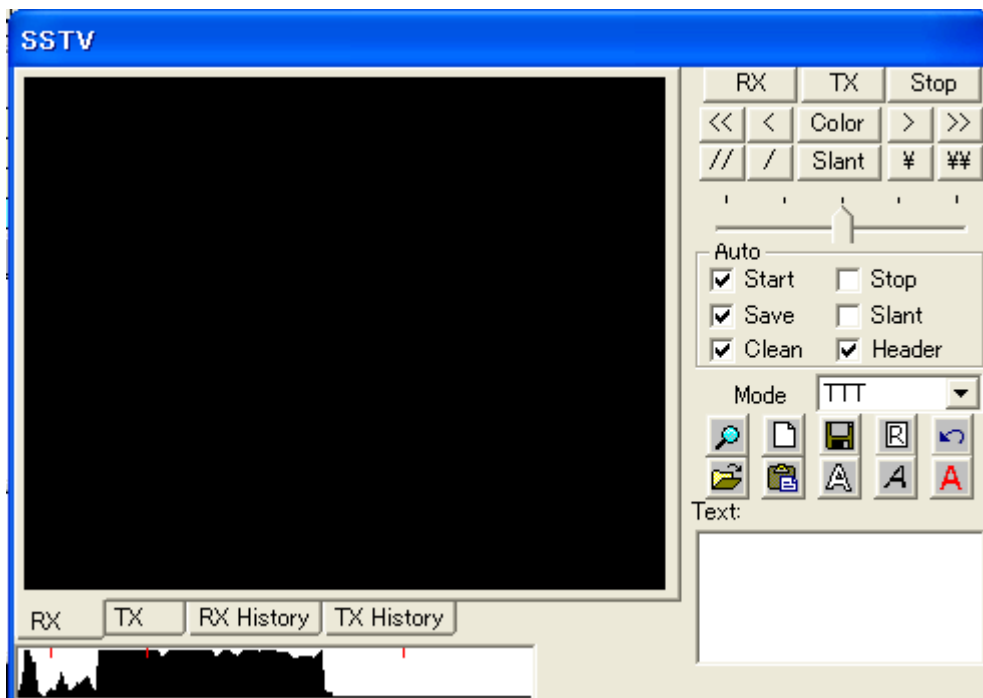


Fig.6



Fig.6-1

● Soundcard setting

Click “Configure” then select “Sound device setting” as Fig. 7

: Then “Sound Device Settings” pop-up as Fig.8 come.

: I select the soundcard as same as the card which is selected at CQ-100 as Fig.9.

: If my computer provides multiple soundcards then I may select the soundcard individually for the MixW2 and CQ-100. But I have no experience.

: As you can see at Fig.1, my computer provides one(1) soundcard which has no stereo-mixer function.

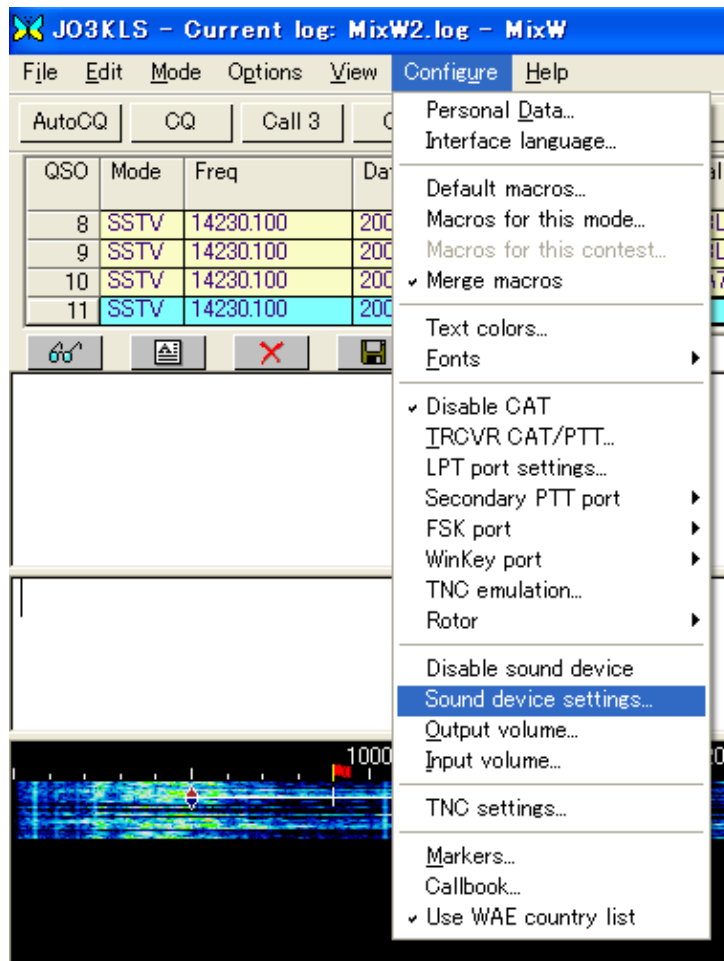


Fig.7

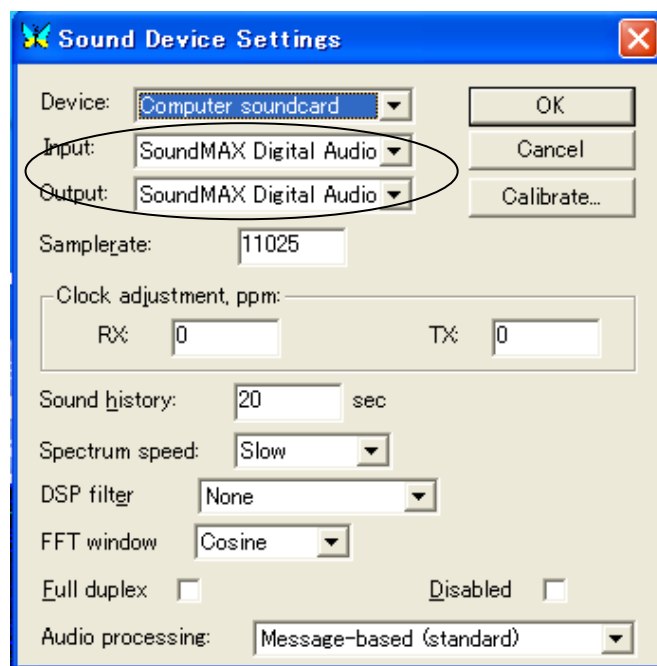


Fig.8

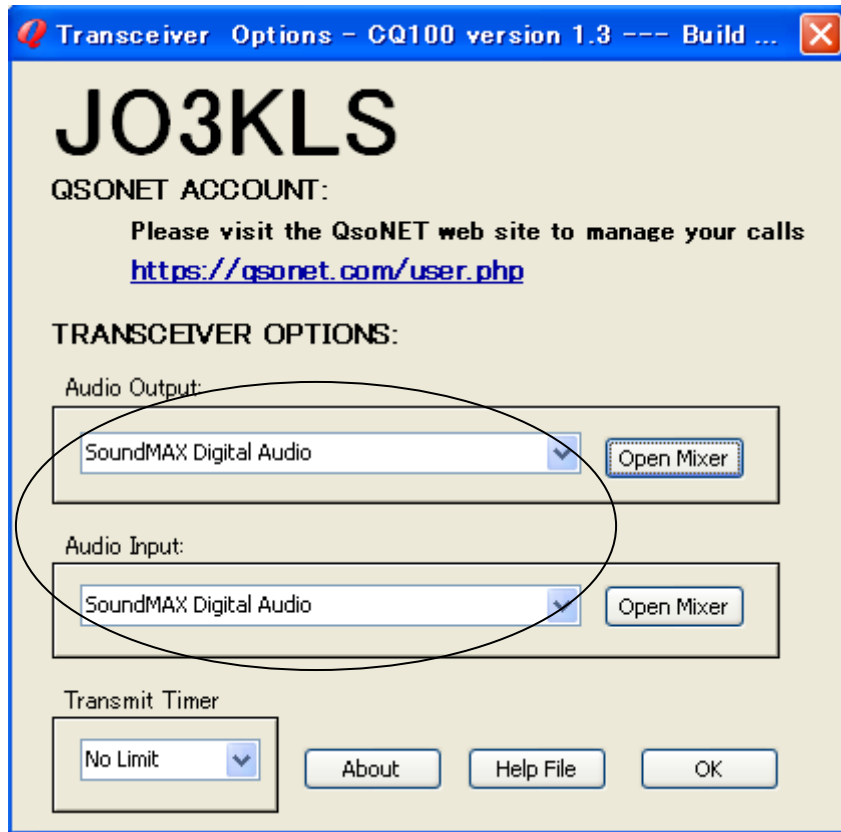


Fig.9

● Audio TX levels setting (No stereo-mixer)

It was important to match my sound output levels.

The Fig.10 is shown my audio levels setting.

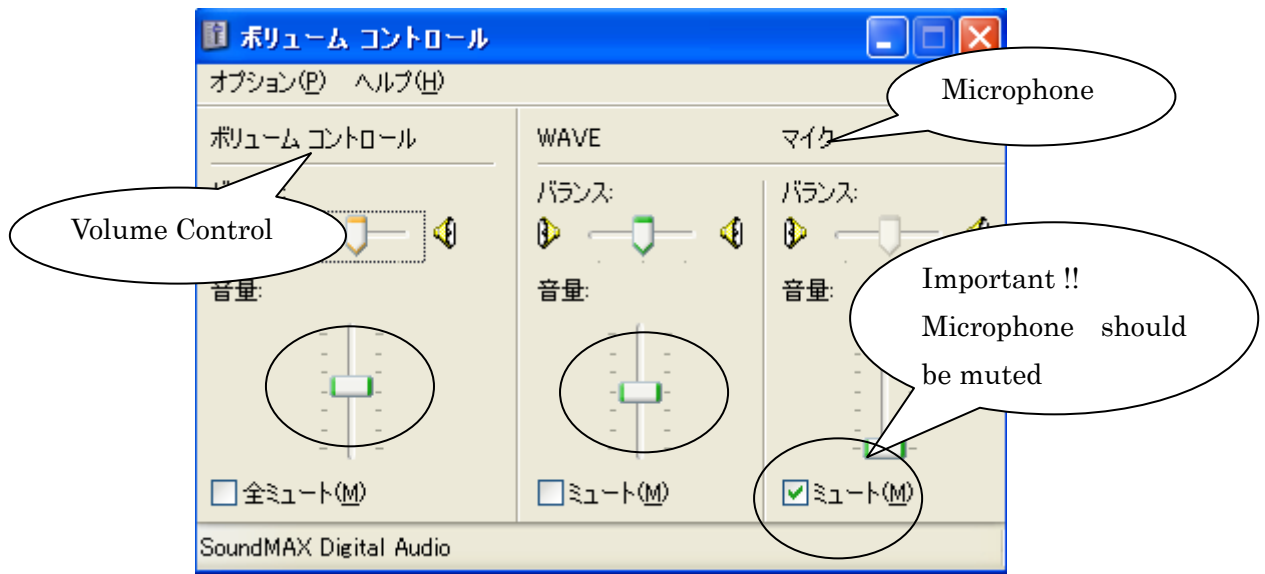


Fig.10 Volume Control

● Audio RX levels setting (No stereo-mixer)

The Fig.11 is shown my audio levels setting.

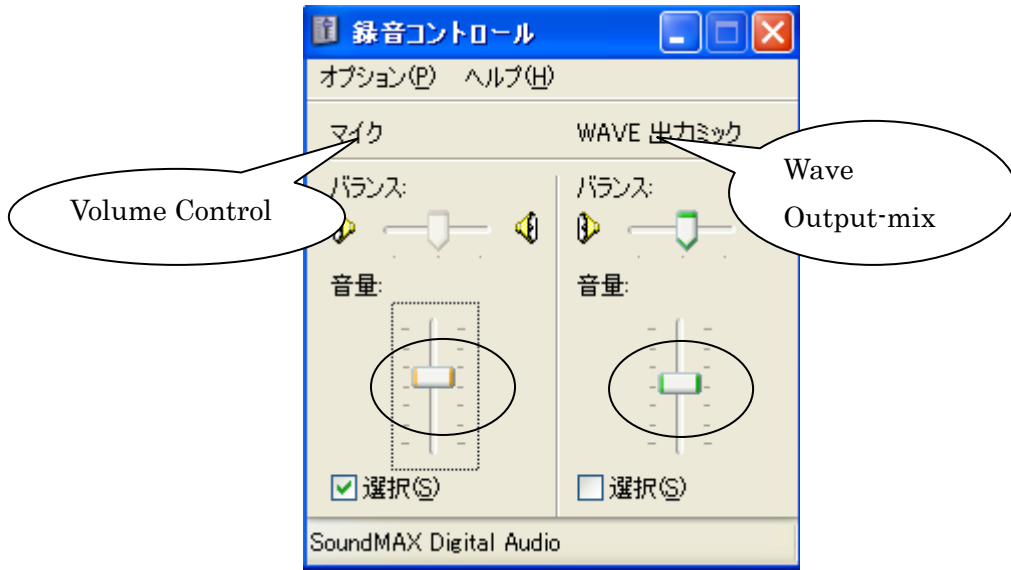


Fig.11 Recording Control

To set the audio level bring up the Windows Volume control by clicking the “Open Mixer” button at the CQ-100. Refer to the Fig.9.

In this case, I could set the audio level by selecting “Configure”→”Output Volume” or “Input Volume” at MixW2. Refer to the Fig.7.

My conclusion at present

A) There are several ways to make-up a SSTV system with CQ-100 as follows :

- (a) One(1) computer with one(1) soundcard with no stereo-mixer for both of MixW2 and CQ-100.
- (b) One(1) computer with one(1) soundcard with stereo-mixer for both of MixW2 and CQ-100.
- (c) One(1) computer with two(2) soundcard with no stereo-mixer for both of MixW2 and CQ-100.
- (d) Two(2) computer, one(1) for MixW2 and the other one for CQ-100.

My case is (a), One(1) computer with one(1) soundcard with no stereo-mixer for both of MixW2 and CQ-100.

The case of JA7NR is (b) ,One(1) computer with one(1) soundcard with stereo-mixer for both of MixW2 and CQ-100.

The case of JA5CU is (d), Two(2) computer, one(1) for MixW2 and the other one for CQ-100.

- B) The following matters probably sometimes cause of fragment of picture.
- (a) The computer's circumstance :
 - Stand-alone or member of the LAN system.
 - If the member of the LAN system, Local IP address is fixed or distributed automatically by DHCP.
 - If the LAN , the system is wireless or wired.

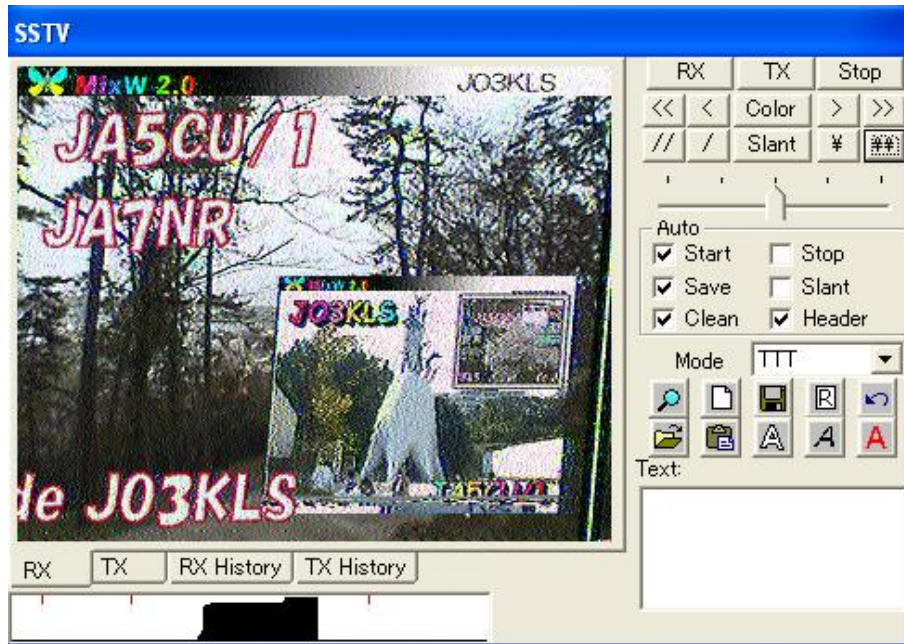
 - (b) The computer itself :
 - Kind of soundcard, CPU, Memory, etc.
 - When I operate SSTV, I use computer with only program CQ-100 and MixW2.

 - (c) The make-up of a SSTV system:
 - Refer to an item A).

 - (d) Internet circumstance :
 - Dial-up, High Speed Broadband, etc.
 - SSTV QRV time period.
- C) The best way to know the SSTV is that I make contact with thousands of station.

I thank both of W1GNS, JA7NR and JA5CU for your kindly guidance.

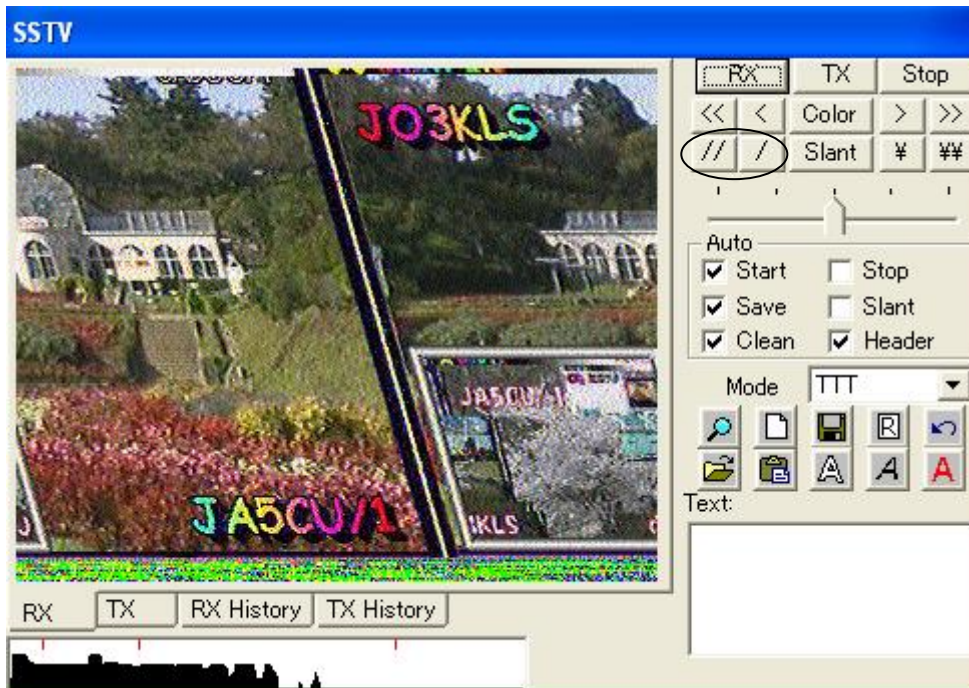
APPENDIX (Received picture)



Slant is right to left but I can say perfect picture because of no fragment.
And I can correct slant with “¥” or “¥¥”



Only a few fragment at the upper portion.



Auto-start dose not work then click the “RX” botton hurriedly.
 Generary, when auto-start dose not work, the sync-bar devate from proper point.
 Slant is left to right. In this case, I can corect slant with “/” or “//”



Manual start (click “RX”) at harf way, slat is right to left but no fragmente.
 In this case, I can corect slant with “¥” or “¥¥”