

Setup MMSSTV for the HamSphere with Windows XP

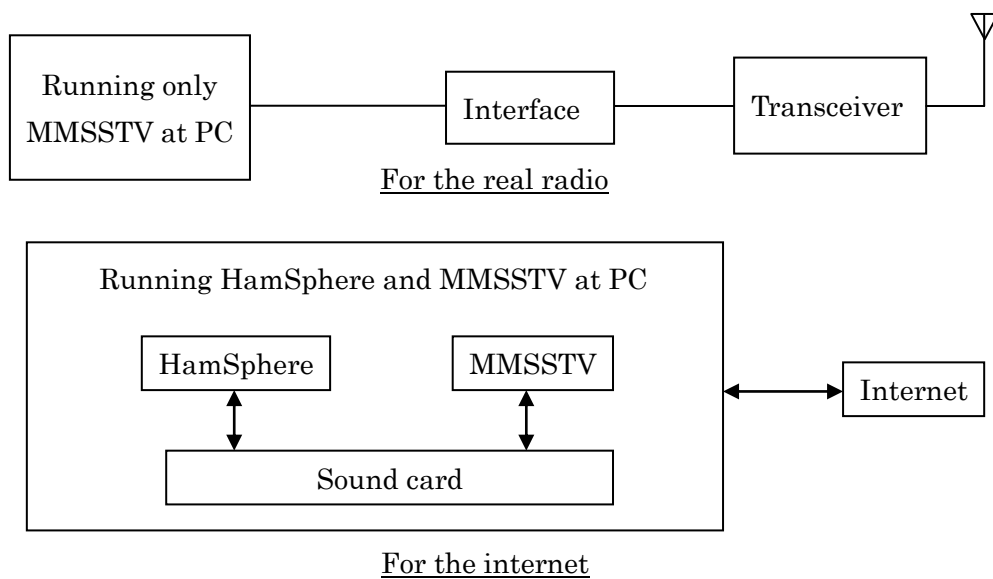
By Shu JO3KLS

When we use MMSSTV on real radio, we need some interface between transceiver and PC. But we do not need any extra interface between HamSphere and MMSSTV.

This is the point on the HamSphere that you just run HamSphere and MMSSTV at same time on your PC.

Then the sound card on your PC become a common resource of HamSphere and MMSSTV.

You may adjust signal level with MMSSTV optional configuration after this.



My Style (Voice)



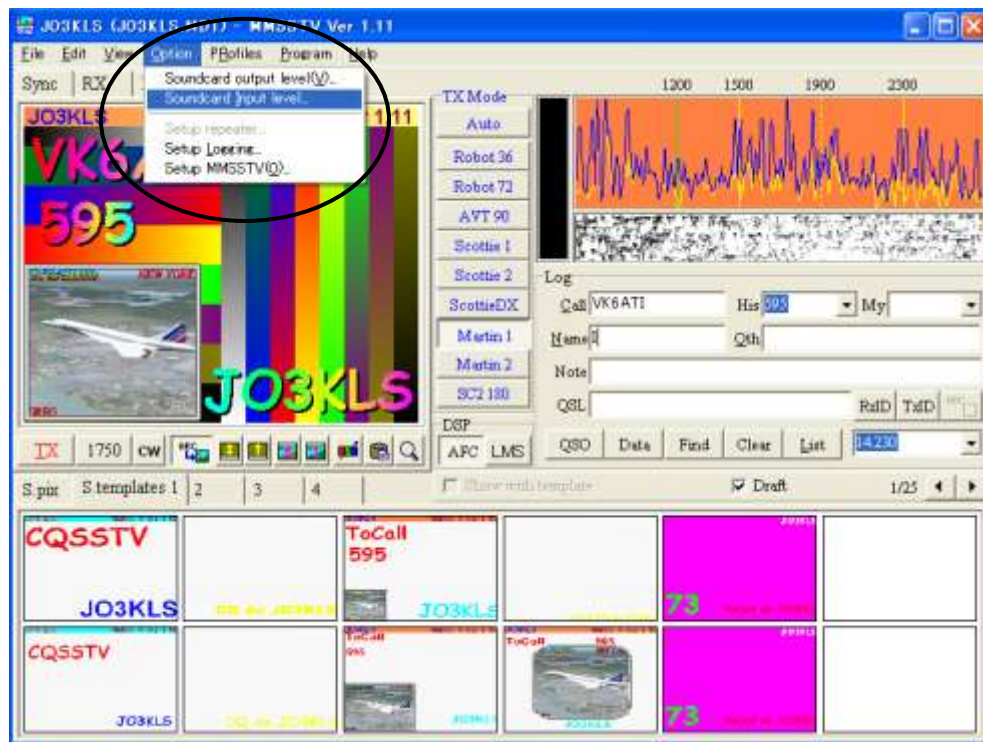
When you talk to someone, you select Microphone on “Recording control”

MY Style (Picture)

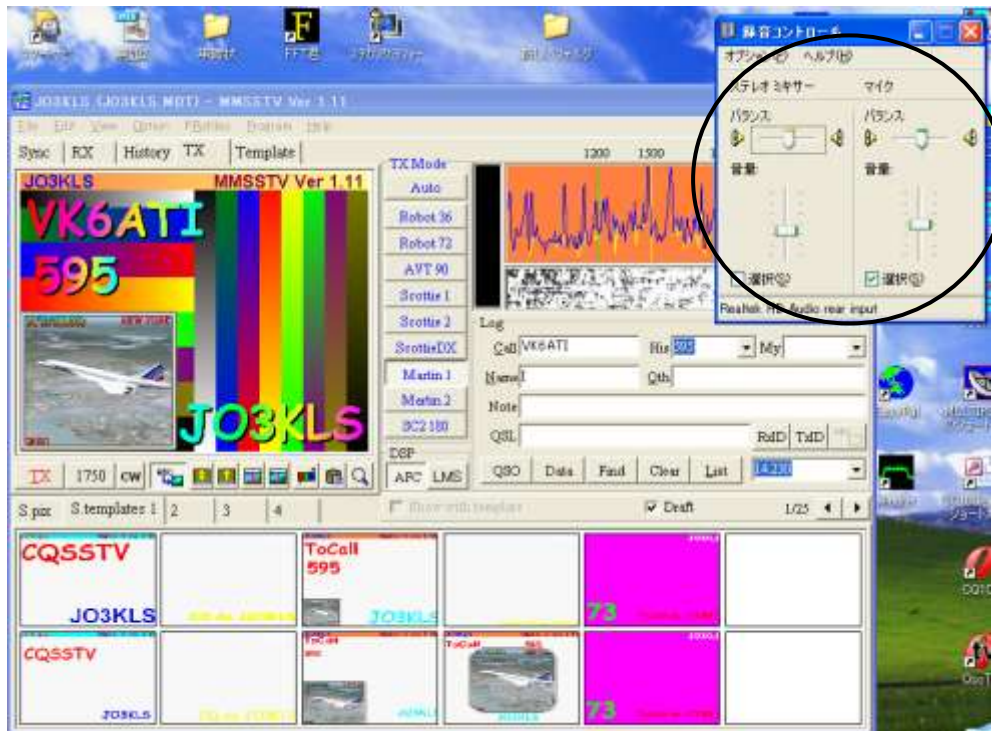


When you send picture, you select StereoMix on “Recording control”

“Recording control” will appear as follows

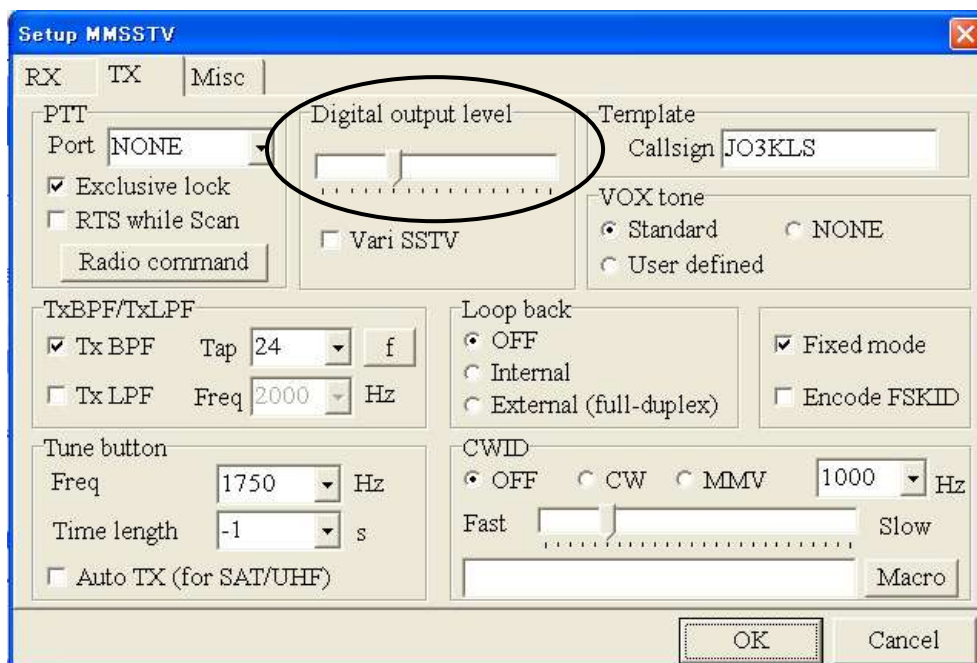


Select “Option” then click “Sound card Input level....”

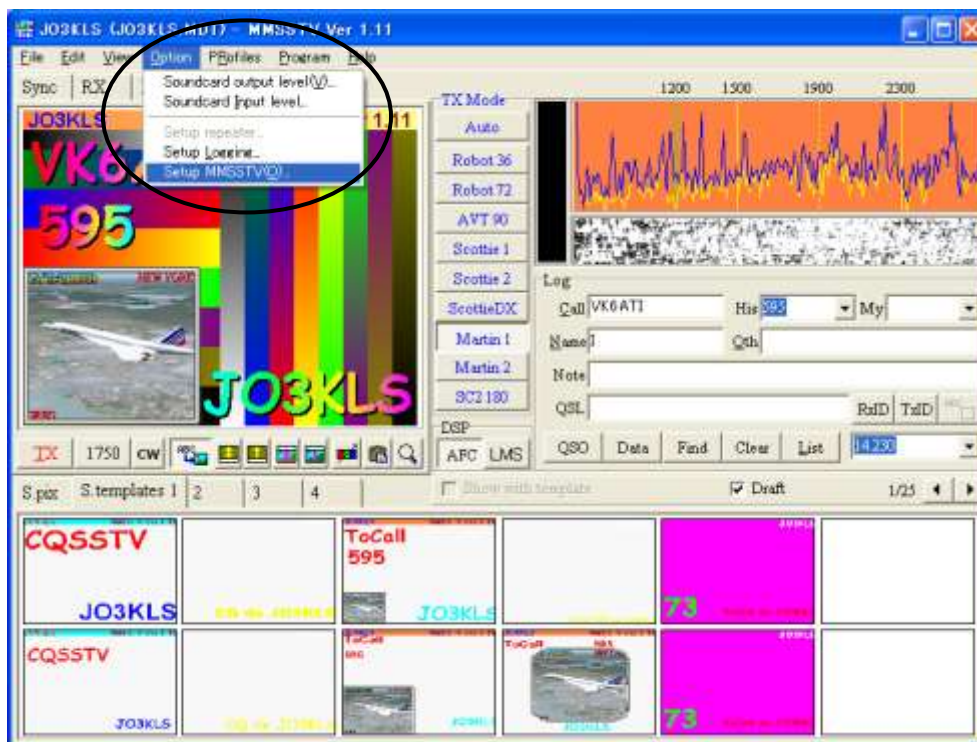


Then “Recording control” appear

Adjustment of “Digital output level” on MMSSTV is also important



You can see “Digital output level” on MMSSTV as follow.



Select “Option” then click “Setup MMSSTV(Q)”